

CONVALEXA™
Solutions



Company Profile

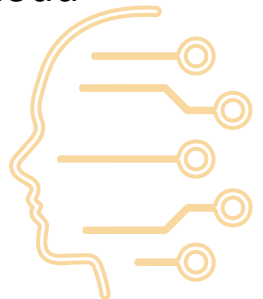


Innovative Solutions for a Connected World

About Us

At Convalex Solutions LLP, we are at the forefront of technological advancements, providing cutting-edge solutions in Automatic Data Capture (ADC), Internet of Things (IoT), Track and Trace, and System Automation. Our mission is to empower businesses with innovative tools to enhance efficiency, accuracy, and connectivity.

Registered with Startup India in Emerging Technologies such as RFID, IoT, Cloud Solutions & AI.



Our Services



- **Automatic Data Capture (ADC)**

Enhance data accuracy and streamline operations with our ADC solutions.

We offer:

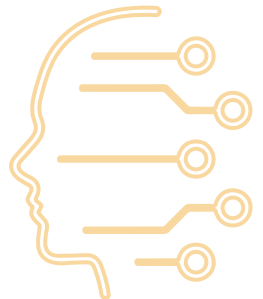
- ✓ Barcode Scanning
- ✓ RFID Technology
- ✓ OCR (Optical Character Recognition)
- ✓ Mobile Data Collection

- **Internet of Things (IoT)**

Connect and automate your processes with our IoT solutions.

We provide:

- ✓ Smart Sensors and Devices
- ✓ Real-Time Monitoring
- ✓ Predictive Maintenance
- ✓ Data Analytics



Our Services



- **Track and Trace**

Ensure product integrity and improve supply chain transparency with our Track and Trace solutions.

We offer:

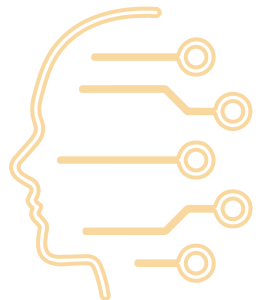
- ✓ Asset Tracking
- ✓ Inventory Management
- ✓ Shipment Monitoring
- ✓ Compliance Solutions

- **System Automation**

Optimize your operations with our advanced automation solutions.

We provide:

- ✓ Workflow Automation
- ✓ Robotic Process Automation (RPA)
- ✓ Automated Quality Control
- ✓ Custom Automation Solutions
- ✓ AI Integration



Why Choose Us?



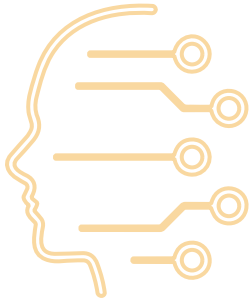
- **Innovative Technology:**
We leverage the latest technologies to provide state-of-the-art solutions.
- **Tailored Solutions:**
Our solutions are customised to meet the unique needs of your business.
- **Expert Team:**
Our team of experts is dedicated to delivering exceptional service and support having combined 50+ years experience in RFID & IT.



Industries We Serve



- **Manufacturing**
- **Healthcare**
- **Logistics and Supply Chain**
- **Retail**
- **Automotive**
- **Pharmaceuticals**
- **Defence**
- **Data Centre**
- **Oil & Gas**



RFID Products



UHF Tags

- REFLECTA™ - MET-A730
- REFLECTA™ - RUP-A730
- REFLECTA™ - AST-S730
- REFLECTA™ - GEN-S730
- REFLECTA™ - WIN-A954
- REFLECTA™ - LAB-A954

- Hard metal Tags
- Hard metal Tags (small size)
- Soft metal Tags
- Soft Non-Metal tags
- Windshield Tags
- Document Tags



UHF Antenna

- REFLECTA™ - EKA-F867
- REFLECTA™ - CER-D865
- REFLECTA™ - HND-Y866

- Long Range RFID Antenna
- Near Range RFID Antenna – (Desktop)
- Short Range RFID Antenna



UHF RFID Reader

- REFLECTA™ - EKR-E710
- REFLECTA™ - EKR-E310

- Long Range RFID Reader 4 Ports
- Long Range RFID Reader 1 Port



RFID Solutions



Vehicle Access Control

Transform Parking Management – Secure, Smart & Efficient!



Smart Parking Management with UHF RFID Technology

A cutting-edge, automated parking solution for secure and seamless vehicle access in housing societies, commercial buildings, campuses, and industrial facilities.

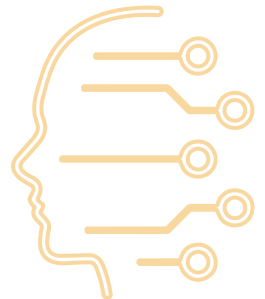
Why Implement This System?

- ✓ **Enhanced Security** – Only authorised vehicles gain entry, reducing unauthorised access risks.
- ✓ **Automated Access Control** – Eliminates manual checks for faster, error-free entry/exit.
- ✓ **Visitor & Contractor Management** – Temporary RFID tags ensure controlled access.
- ✓ **Operational Efficiency** – Reduces congestion, saves time, and minimizes human intervention.
- ✓ **Scalability & Integration** – Easily expandable and integrates with CCTV & security systems.
- ✓ **Data-Driven Insights** – Generate reports on vehicle logs, parking utilization, and security alerts.



The campus management team can use the system to:

- Monitor vehicle movement in real-time.
- Generate detailed reports on vehicle entry and exit times.
- Track the usage of parking spaces and optimize their allocation.
- Manage temporary access for visitors and contractors efficiently.
- Ensure compliance with security protocols and regulations.



This system not only boosts security but also optimizes parking space utilization, making it an ideal solution for modern facilities. With UHF RFID technology, parking management becomes smarter, safer, and more efficient.

RFID Solutions



Asset Tracking Solution

Eliminate manual tracking—optimize, automate, and secure asset management with RFID!



Smart Parking Management with UHF RFID Technology

A cutting-edge, automated parking solution for secure and seamless vehicle access in housing societies, commercial buildings, campuses, and industrial facilities.

Why Implement This System?

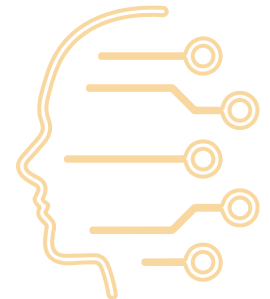
- ✓ **Real-Time Asset Tracking** – Automates asset movement monitoring with RFID readers & handheld scanners.
- ✓ **Seamless Lifecycle Management** – Tracks assets from procurement to storage, issuance, and custodian declaration.
- ✓ **Enhanced Accountability** – Custodian status updates (Idle, In-use, Broken, Lost) with photo uploads ensure responsibility.
- ✓ **Audit & Compliance Ready** – Generates accurate reports on asset utilization, depreciation, and inventory status.
- ✓ **Cost & Time Efficiency** – Eliminates manual errors, reduces asset loss, and optimizes procurement decisions.
- ✓ **Scalable & User-Friendly** – Adapts to various asset types and integrates easily with existing systems



Complementing Technologies:

- UHF RFID:** Enables long-range, bulk reading of assets for efficient tracking.
- Barcode/QR Code:** Provides cost-effective tagging for smaller assets or consumables.
- ISM Tags:** Ensures reliable tracking in challenging environments (e.g., high temperatures or metal interference).

This system not only enhances asset management but also provides actionable insights, improves accountability, and ensures compliance, making it an indispensable tool for modern organizations.



RFID Solutions



Personnel Tracking

Boost Safety, Improve Efficiency—Track Personnel Smarter with RFID!



Smart Personnel Tracking for Safety & Efficiency

A cutting-edge tracking solution using UHF RFID, Barcode/QR Code, and ISM tags to enhance safety, security, and workforce management in plant areas, construction sites, and emergency scenarios.

Why Implement This System?

- ✔ **Real-Time Personnel Tracking** – Monitors movement across sites, restricted zones, and emergency gathering points.
- ✔ **Automated Attendance & Work Hours** – Eliminates manual logs, ensuring accurate records and labour compliance.
- ✔ **Enhanced Safety & Compliance** – Ensures only authorized personnel access high-risk zones, triggering alerts for unauthorized entry.
- ✔ **Emergency Readiness** – Provides real-time data to account for personnel during evacuations or drills or disaster handling situations.
- ✔ **Operational Efficiency** – Reduces manual tracking time, improves workforce allocation, and enhances reporting accuracy.
- ✔ **Scalable & User-Friendly** – Adapts to projects of all sizes, making personnel tracking seamless and reliable.



Complementing Technologies:

- UHF RFID:** Enables long-range, bulk reading of personnel badges for efficient tracking.
- Barcode/QR Code:** Provides cost-effective identification for smaller teams or temporary workers.
- ISM Tags:** Ensures reliable tracking in challenging environments (e.g., high temperatures, metal interference, or outdoor construction sites).

This system not only enhances safety and operational efficiency but also provides actionable insights, improves accountability, and ensures compliance, making it an indispensable tool for modern industrial and construction environments.



Get in Touch



Ready to transform your business? Contact us today to learn more about how our solutions can help you achieve your goals.



info@convalexain

